

SOFT LANDSCAPE CULTIVATION

Cultivate all planting and turf areas by deep ripping to a depth of 300mm. Apply gypsum at a rate of 1kg per m² to ripped soil. Apply Organo matter 200mm deep over ripped soil. Apply imported soil to prepared planting holes.

IMPORTED SOILS
Imported soil to be a standard "Envirogreen" premium garden blend or similar to AS4415 consisting of 60% Composted Organo; 40% Mineral Components, a pH of 6.0 to 7.0 and LowCare to AS4415 consisting of 70% Composted Organo; 30% Mineral Components, a pH of 6.0 to 7.0.

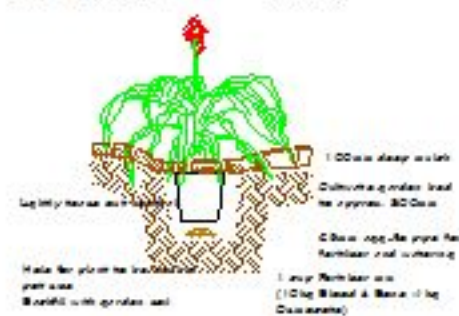
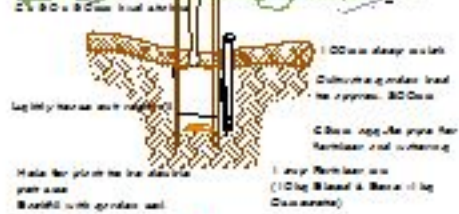
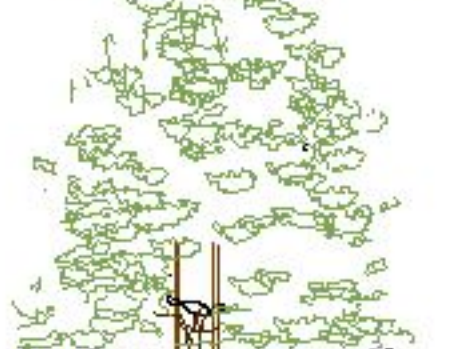
"Hydrocell" lawn fibres to be applied to all planting bed, pot containers and turf areas.

PLANTING
Plants shall be container grown well formed past and disease free true to species stored and nominated size. Plants are to be watered adequately to sustain healthy growth at a minimum of three times weekly for the first 12 weeks and once weekly when established.

FERTILIZING
All plants shall be fertilized at time of planting with blend of 10kg blood & bone & 1kg calcium.

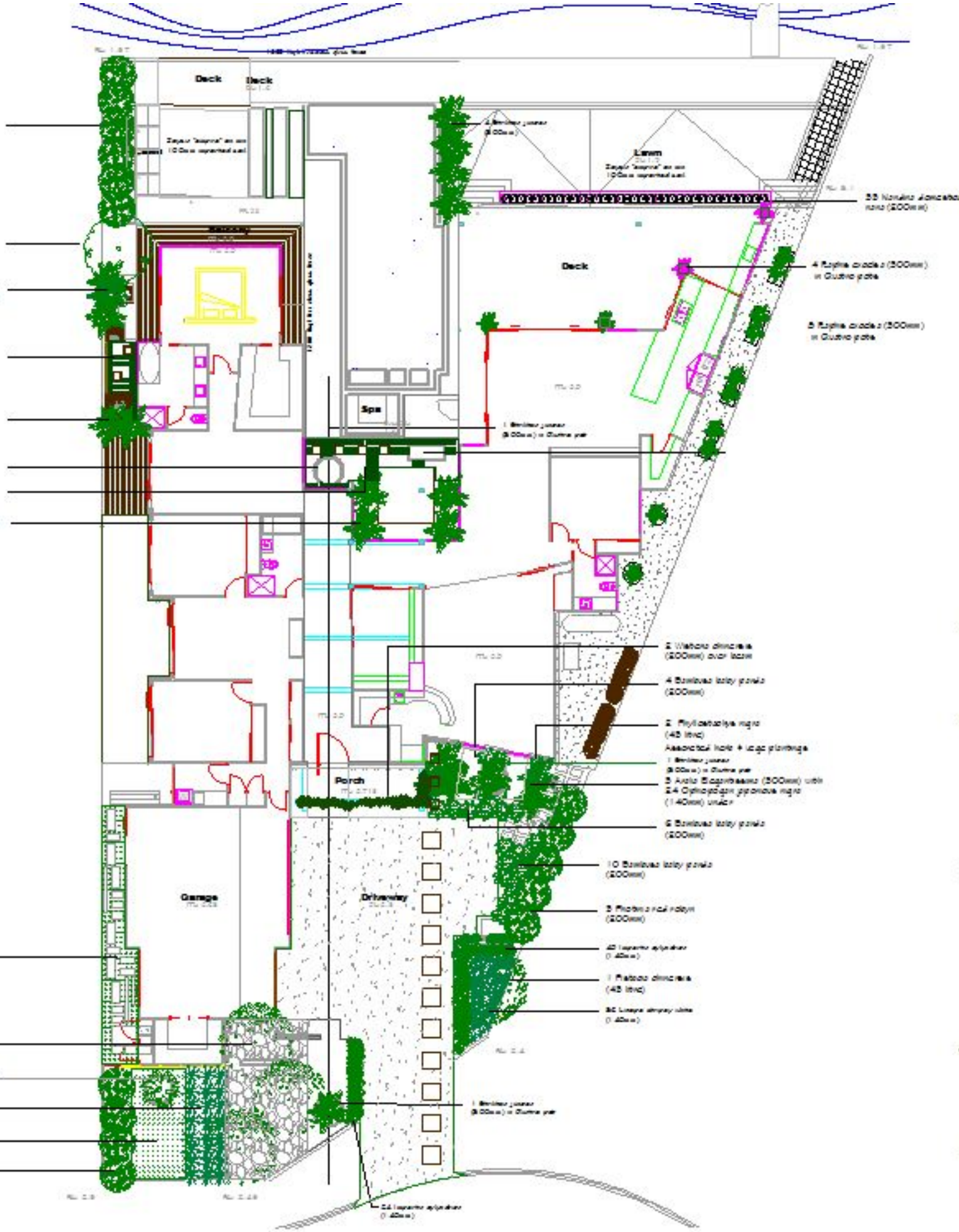
MULCHING
All garden areas are to be mulched to a depth of 100mm with an organo mulch, pine bark fines. Finish mulch flush with adjoining edges and ensure mulch depth is reduced around stems of plants. All weed matter should be removed prior to placement of mulches. Separate organo mulch from foundations and structures with a 300mm deep aggregate trench barrier.

TURFING
Turf shall be "Zoyia serena" lay turf alone topped or evenly prepared topsoil. Finish turf flush to adjoining edges and other hard surfaces e.g. concrete slabs, edges. Turf should be rolled after laying, watered in well and lightly top-dressed with a weeded iron sand to slow leeching of gaps. Apply "Soams" turf starter as per recommended rates to all turf areas and water in well.



Planting Detail

- 6 Phlox paniculata (200mm)
- 1 Phlox paniculata (45 ltr) with associated associated species (200mm) UNCL
- 3 Acaia Sapporiana (200mm) with 24 Cyrtopogon pyramidalis nigra (140mm) UNCL
- 24 Phlox paniculata (140mm)
- 2 Santalum album 'Noveboracense' (45 ltr)
- 1 Buxus japonica (300mm) in 200mm pot
- 24 Phlox paniculata (140mm)
- 4 Acaia Sapporiana (200mm) with 24 Cyrtopogon pyramidalis nigra (140mm) UNCL
- 45 Solanum elaeagnifolium (140mm)
- 3 Acaia gmeliniana (45 ltr)
- 1 Daylily species in 200mm Pot
- 24 Cotinus coccinea (200mm)
- 45 Phlox paniculata (140mm)
- 4 Phlox paniculata (200mm)



Project	Residential Landscape
Client	
Address	
Designed	Ted Maguire
Date	March 2010
Draw No.	100114
EPD	
Sheet	3 of
Issue	A
Scale	1:200 @ A3, 1:100 @ A1
Title	Horticultural Layout